



PREMIER SIPS
STRUCTURAL INSULATED PANELS

ELEVATING BUILDING SPACES

with SIPS Quiet STC
Fire-Rated Assemblies



PRODUCT OVERVIEW

Sound control is important in lodging structures, multi-family apartments, condominium complexes, Senior Living Facilities or any building that includes dwelling units with shared walls.

Shared walls and corridors can often result in unwanted noise from attached units and hallways. For residents this also gives the perception of less privacy.

It's a challenge to get a stick-framed structure to meet both sound transmission and fire resistance ratings, but with Premier SIPS this can be done quickly and cost effectively.

Sound Control in Building Design plays a critical role to productivity and well being. In multi-family structures where dwelling units share attached walls, Building Codes require a measure of sound privacy between units. The International Building Code (IBC) specifies a minimum architectural design standard of privacy of 50 STC (Sound Transmission Class) between units, which can require multiple products, installation steps and associated costs.



THE SIPS SOLUTION

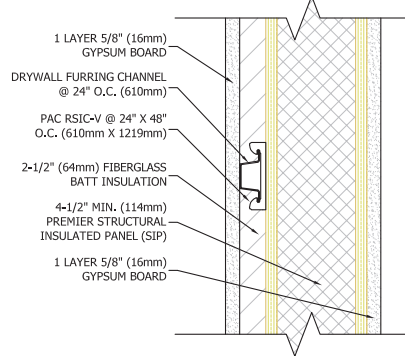
Premier SIPS deliver energy efficiency, high STC ratings and hourly fire-rated assemblies in an offsite insulated framing system that arrives pre-manufactured ready to assemble per each building's floor plans. With today's construction labor shortages, Premier SIPS provide contractors with a system that installs twice as fast as traditional framing, insulation and sheathing practices.



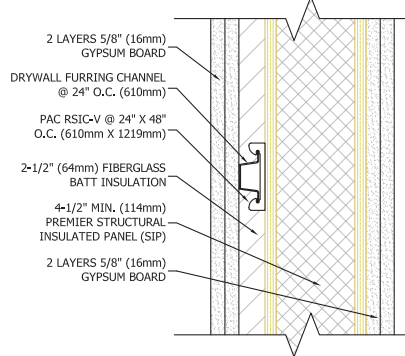
Testing by an independent laboratory confirms that Premier SIPS (Structural Insulated Panel Systems) reduce sound transmission, for a quieter indoor environment. Certain wall assemblies using Premier SIPS achieve sound transmission class ratings (STC) of up to 58 and 59 - well above the STC 50 requirement for walls separating dwelling units. Notably, these assemblies are also ASTM E119 hourly fire-rated assemblies.

MULTIFAMILY ASSEMBLIES

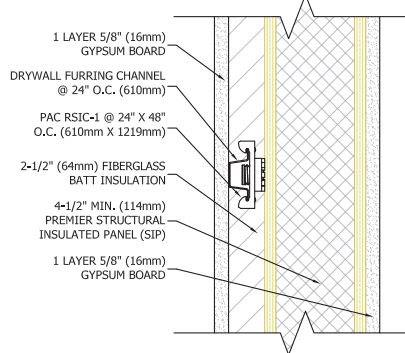
Assembly H • STC: 48



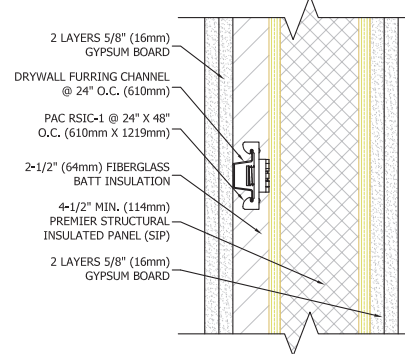
Assembly I • STC: 58*



Assembly J • STC: 52

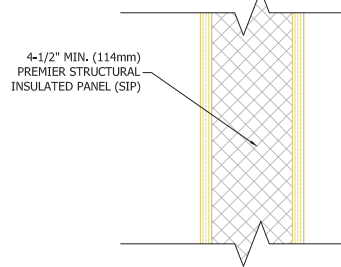


Assembly K • STC: 59*

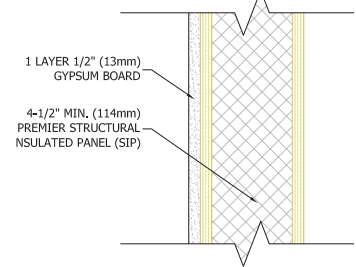


RESIDENTIAL ASSEMBLIES

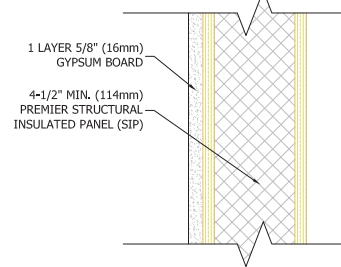
Assembly A • STC: 22



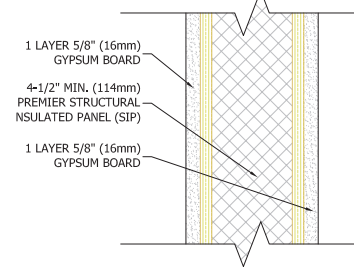
Assembly B • STC: 28



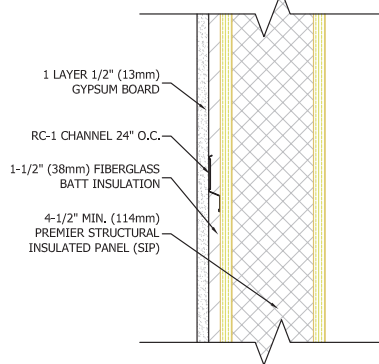
Assembly C • STC: 29



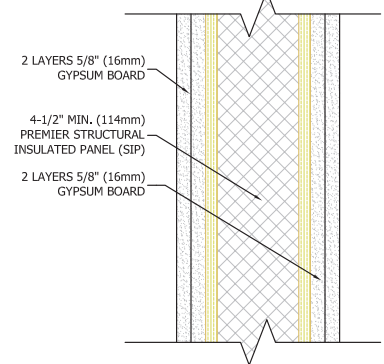
Assembly D • STC: 33



Assembly E • STC: 39



Assembly F • STC: 41*



Assembly G • STC: 51*

