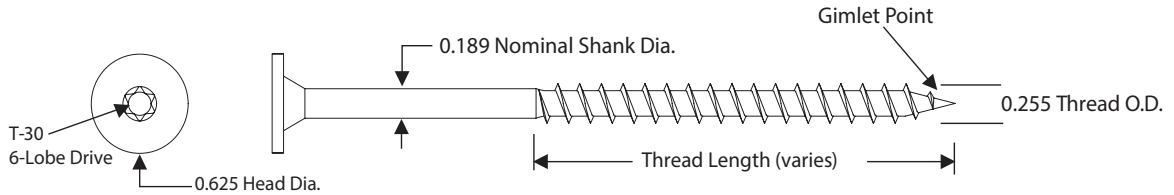


PREMIER WOOD SCREWS



WOOD SCREW PROPERTIES			
Tensile (lbs) AISI S904	Shear (lbs) AISI S904	Bending Yield Strength - Fyb (psi) ASTM F1575	Corrosive Resistance ASTM D6294, ETAG 006
3555	2580	185,000	<15% Red Rust after 30 cycles

WITHDRAWAL: LUMBER & ENGINEERED WOOD - LBS./IN. ¹							
SPF/HF (0.42)		DF/SP (0.50)		LVL (0.50)		LSL (0.50)	OSB (7/16")
Face Grain	Edge Grain	Face Grain	Edge Grain	Face Grain	Edge Grain	Face Grain	Face
799	615	899	702	556	495	711	265

¹ Load values include fastener tip.

WITHDRAWAL: CONCRETE & CMU - LBS. ¹		
2500 psi Concrete	5000 psi Concrete	CMU ²
682	869	713

¹ Fastener penetrates 1" into concrete or CMU block, including the tip.

² Concrete Masonary unit (CMU) conforming to ASTM C90.

HEAD PULL-THRU - LBS.	
7/16" OSB	SIP
490	630

LATERAL LOAD RESISTANCE - LBS.		
Main Member	Side Member	Load
SPF ¹	8-1/4" SIP	943

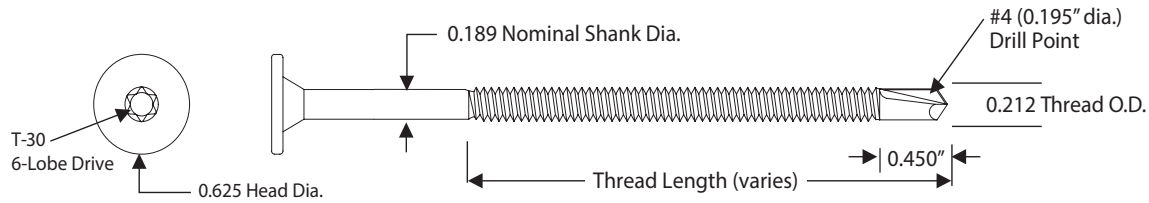
¹ 1-3/4" fastener embedment into edge grain, including tip.

NOTE:

Premier Wood Screw properties are provided. All values are average ultimate values. As determined by the project architect/engineer, appropriate safety factors must be used in design.



PREMIER HEAVY DUTY METAL SCREWS



HEAVY DUTY METAL SCREW PROPERTIES

Tensile (lbs) AISI S904	Shear (lbs) AISI S904	Bending Yield Strength - Fyb (psi) ASTM F1575	Corrosive Resistance ASTM D6294, ETAG 006
3855	2625	185,000	<15% Red Rust after 30 cycles

WITHDRAWAL: CORRUGATED STEEL DECK - LBS. ¹

16 ga. (36 ksi)	16 ga. (100 ksi)	12 ga. (50 ksi)	1/8" (36 ksi)	3/16" (60 ksi)	1/4" (60 ksi)
491	794	1255	1454	3098	3814

¹ Minimum (3) threads of penetration of fastener through deck as measured from underside of steel.

HEAD PULL-THRU - LBS.

7/16" OSB	SIP
490	630

LATERAL LOAD RESISTANCE - LBS.

Main Member	Side Member	Load
1/8" Structural Steel ¹	8-1/4" SIP	929

¹ Minimum (3) threads of penetration of fastener through steel as measured from underside of steel.

NOTE:

Premier Heavy Duty Metal Screw properties are provided. All values are average ultimate values. As determined by the project architect/engineer, appropriate safety factors must be used in design.



NAIL AND SCREW WITHDRAWAL LOADS

7/16 IN. OSB

Fasteners shall be long enough to penetrate OSB by at least 1/4 in. Please refer to APA Technical Topics TT-109 for complete details.

WOOD SCREWS WITHDRAWAL LOADS							
Gauge	#6	#7	#8	#9	#10	#12	#14
Diameter (in.)	0.138	0.151	0.164	0.177	0.190	0.216	0.242
lbs	56	61	66	72	77	87	98

RINK SHANK NAIL WITHDRAWAL LOADS								
Diameter (in.)	0.091	0.094	0.097	0.113	0.120	0.128	0.135	0.148
lbs	36	37	38	45	48	51	53	59

SMOOTH SHANK NAIL WITHDRAWAL LOADS								
Diameter (in.)	0.092	0.099	0.113	0.120	0.128	0.131	0.135	0.148
lbs	9	10	11	12	13	13	13	14

NOTE:

Nail and Screw withdrawal design loads when installed in the 7/16 in. OSB facing of a SIP.



NAIL AND SCREW WITHDRAWAL LOADS

5/8 IN. OSB

Fasteners shall be long enough to penetrate OSB by at least 1/4 in. Please refer to APA Technical Topics TT-109 for complete details.

WOOD SCREWS WITHDRAWAL LOADS							
Gauge	#6	#7	#8	#9	#10	#12	#14
Diameter (in.)	0.138	0.151	0.164	0.177	0.190	0.216	0.242
lbs	75	83	90	97	104	118	133

RINK SHANK NAIL WITHDRAWAL LOADS								
Diameter (in.)	0.091	0.094	0.097	0.113	0.120	0.128	0.135	0.148
lbs	49	51	52	61	64	69	73	80

SMOOTH SHANK NAIL WITHDRAWAL LOADS								
Diameter (in.)	0.092	0.099	0.113	0.120	0.128	0.131	0.135	0.148
lbs	12	13	15	16	17	17	18	20

NOTE:

Nail and Screw withdrawal design loads when installed in the 5/8 in. OSB facing of a SIP.



NAIL AND SCREW WITHDRAWAL LOADS

3/4 IN. OSB

Fasteners shall be long enough to penetrate OSB by at least 1/4 in. Please refer to APA Technical Topics TT-109 for complete details.

WOOD SCREWS WITHDRAWAL LOADS							
Gauge	#6	#7	#8	#9	#10	#12	#14
Diameter (in.)	0.138	0.151	0.164	0.177	0.190	0.216	0.242
lbs	92	100	109	117	126	143	161

RINK SHANK NAIL WITHDRAWAL LOADS								
Diameter (in.)	0.091	0.094	0.097	0.113	0.120	0.128	0.135	0.148
lbs	59	61	63	74	78	83	88	96

SMOOTH SHANK NAIL WITHDRAWAL LOADS								
Diameter (in.)	0.092	0.099	0.113	0.120	0.128	0.131	0.135	0.148
lbs	15	16	18	19	21	21	22	24

NOTE:

Nail and Screw withdrawal design loads when installed in the 3/4 in. OSB facing of a SIP.



PREMIER SIPS ACCESSORIES

Premier Building Systems has designed, developed, and tested compatible accessories for your Premier SIPS products to achieve the maximum performance. With decades of use in the field, you can be sure these accessories have proven themselves year after year.

ACCESSORIES CONTENTS

Premier SIPS Screws.....	1-26
Premier Screw Length Guide.....	1-27
Premier SIPS Sealant.....	1-28
Premier SIPS Tape.....	1-29
Premier SIPS Building Wrap.....	1-30

PREMIER SIPS SCREWS

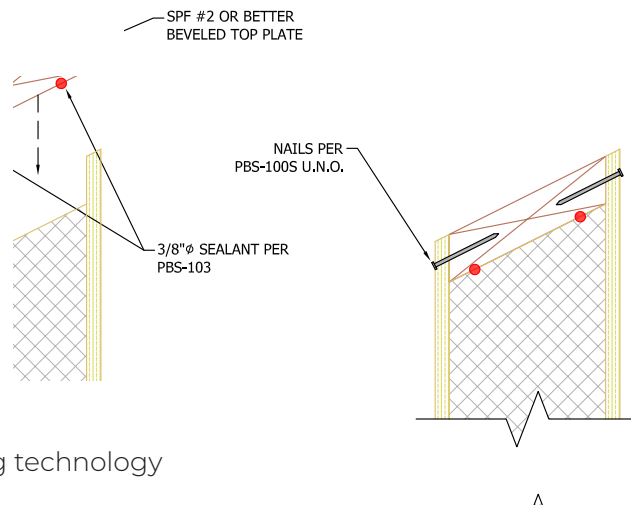
Premier SIPS screw fasteners are factory made and supplied with your order. The screws were developed specifically for connecting Premier SIPS to each other, beams, purlins and posts of wood and light gauge metal.

ADVANTAGES

- Corrosion resistant coating
- Excellent pull-out resistance
- State-of-the-art tempering and coating technology
- Sizes from 5" to 18" in increments of 1"

APPLICATIONS

- Fasten siding, roofing, structural elements, cabinets and many other components
- To clarify the performance of screws installed in OSB, refer to the "Screw Withdrawal Load Tables" that follow
- Dimensional 2x's require a minimum 1" penetration
- Wall connections require that screws be used 2' o.c.
- Roof connections require that screws be used 1' o.c.
- Frequency of screw fasteners depends on the imposed loads that SIPS must resist. Installers must follow the requirements specified on Layout Drawings.

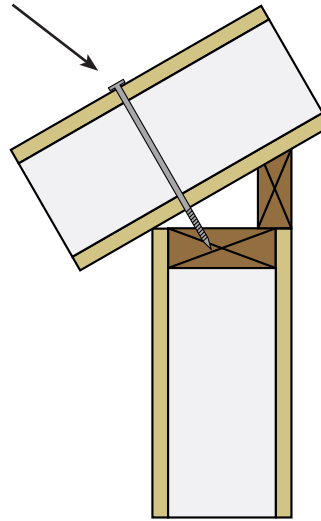


PREMIER SCREW LENGTH GUIDE

SIP THICKNESS ¹					
Slope	4-1/2"	6-1/2"	8-1/4"	10-1/4"	12-1/4"
2/12	6"	8"	10"	12"	14"
4/12	6"	8"	10"	12"	14"
6/12	7"	9"	10"	12"	14"
8/12	7"	9"	11"	13"	15"
10/12	8"	10"	12"	14"	16"
12/12	8"	10"	12"	14"	16"

¹ Provides roughly a 1" penetration into the top plate.

PREMIER SCREW



NOTE:

Premier Screw Length Guide provides recommended Premier SIPS Screw length required based on SIP thickness and roof slope.

