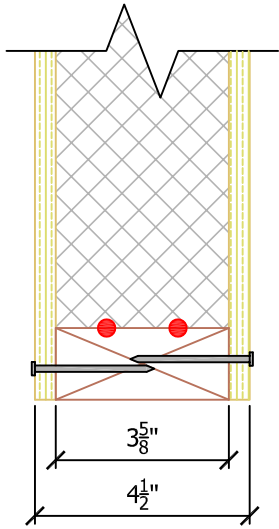
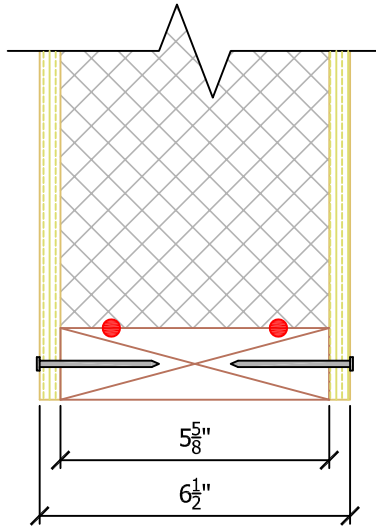


NOTES:

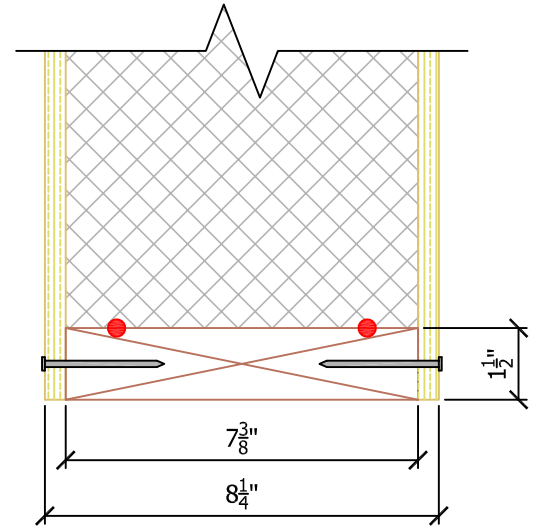
1. SIPS ARE AVAILABLE IN THICKNESSES FROM 4-1/2" THROUGH 12-1/4".
2. SIPS ARE SIZED TO USE STANDARD 2X LUMBER PLATING DIMENSIONS + 1/8" TO ACCOMMODATE LUMBER MILL VARIATIONS.
3. SIP CORE THICKNESS WILL NEVER CHANGE. STANDARD FACINGS ARE 7/16" OSB ON BOTH SIDES.



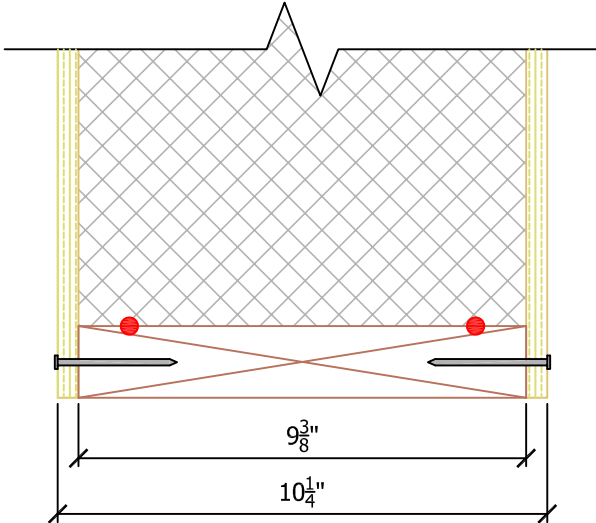
R-VALUE		
	EPS	GPS
75° F	15	18
40° F	16	19



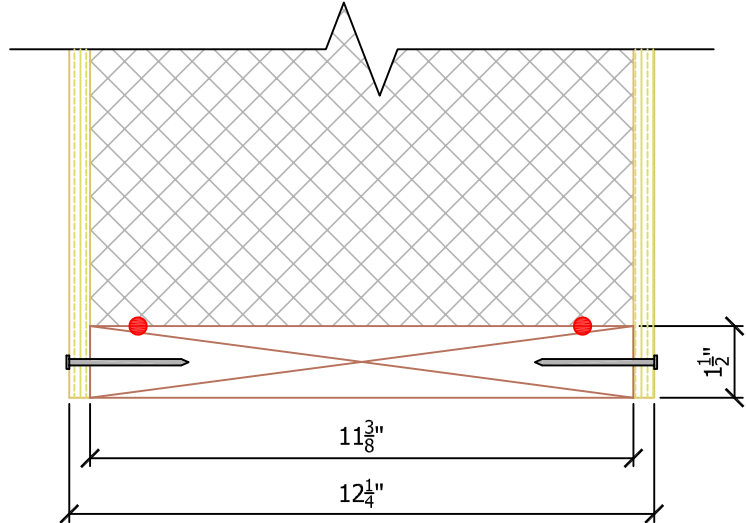
R-VALUE		
	EPS	GPS
75° F	23	28
40° F	25	29



R-VALUE		
	EPS	GPS
75° F	30	36
40° F	32	38



R-VALUE		
	EPS	GPS
75° F	37	45
40° F	40	48



R-VALUE		
	EPS	GPS
75° F	45	55
40° F	49	58

N.T.S.

* SIP THICKNESSES ARE NOMINAL INCHES

Rev: 12/10/2021