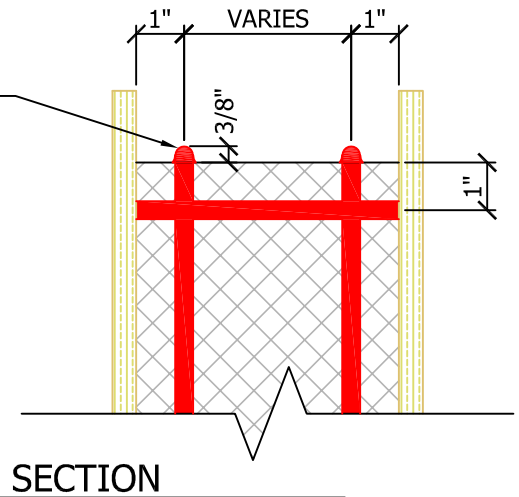


NOTES:

1. IT IS CRITICAL SIPs ARE SEALED FOLLOWING DETAILS TO PREVENT POTENTIAL MOISTURE DAMAGE.
2. MAKE CERTAIN SURFACES ARE CLEAN, DRY, AND FREE OF DIRT AND FOREIGN MATERIALS PRIOR TO PLACEMENT OF SEALANT.
3. ALWAYS APPLY 3/8" DIAMETER CONTINUOUS BEAD
4. ALWAYS APPLY SEALANT IN A STRAIGHT LINE OFFSET 1" FROM FACE OF OSB.
5. STORE SEALANT IN A WARM AREA PRIOR TO INSTALLATION DURING COLD WEATHER.
6. FAILURE TO FOLLOW SEALANT APPLICATION DETAILS WILL VOID WARRANTY.
7. REFER TO SEALANT SAFETY DATA SHEETS.
8. ONE 20 OUNCE TUBE OF SEALANT APPLIED AT A 3/8" ϕ BEAD WILL YIELD 27 LINEAL FEET. PERIODICALLY CHECK YOUR APPLICATION TO ENSURE THAT YOU ARE APPLYING SEALANT AT THE CORRECT RATE.
9. AFTER SIP SHOP DRAWINGS ARE COMPLETE WE WILL INCLUDE ENOUGH SEALANT TO APPLY (2) 3/8" BEADS AROUND THE ENTIRE FABRICATED SIP PERIMETER INCLUDING OPENINGS. IF YOU REQUIRE ADJUSTMENT TO THE SEALANT PROVIDED BE SURE TO NOTIFY PREMIER PRIOR TO SIGNING A CONTRACT OF SALE.
10. FAILURE TO FOLLOW SEALANT APPLICATION INSTRUCTIONS WILL VOID WARRANTY. IT IS CRITICAL THAT SIPs ARE SEALED CORRECTLY TO PREVENT MOISTURE FROM CONDENSING INSIDE THE SIPs. ADEQUATE AIR EXCHANGE EQUIPMENT WILL SIGNIFICANTLY REDUCE THIS RISK, CHECK WITH A MECHANICAL ENGINEER FOR SPECIFIC REQUIREMENTS FOR YOUR STRUCTURE.

FULL 3/8" ϕ BEAD SEALANT IS REQUIRED. NOT A FLATTENED 3/8" WIDE RIBBON. SEALANT WILL SPREAD DURING ASSEMBLY.



N.T.S.

Rev: 12/10/2021

