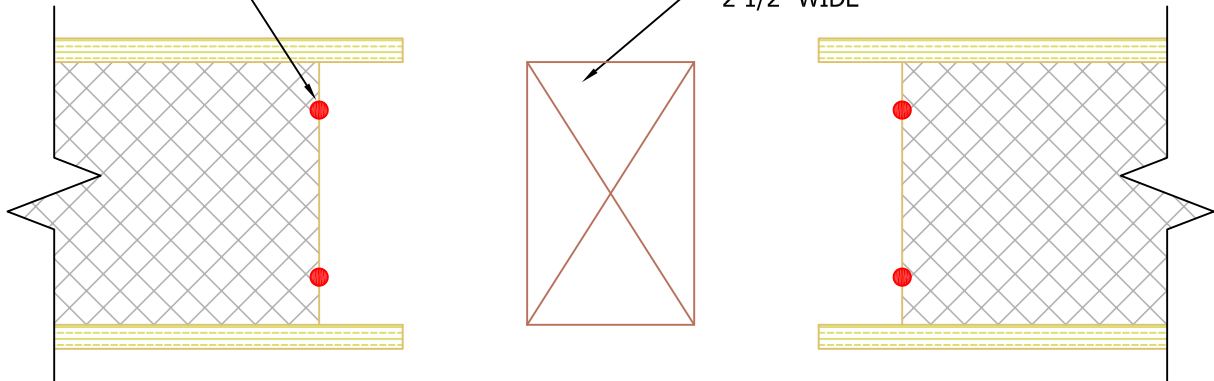


SINGLE MEMBER LUMBER SPLINE:

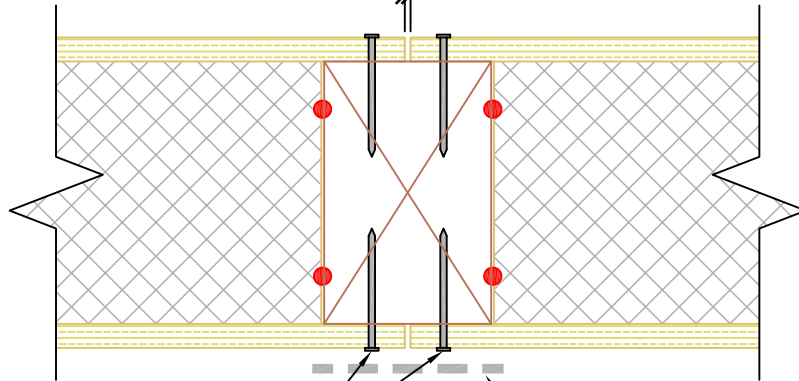
3/8" ϕ SEALANT PER
PBS-103 OR PBS-104

CONTINUOUS SINGLE
MEMBER SPLINE MIN.
2 1/2" WIDE



1/8" GAP

1/8"

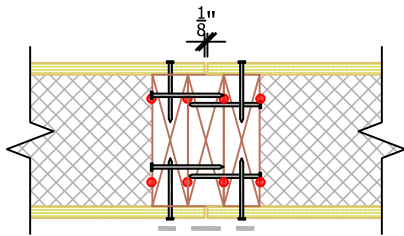


NAILS PER
PBS-100S or
PBS-100D U.N.O.

SIP TAPE LOCATED
INTERIOR FACE PER
PBS-105

(ODD NUMBERED) 2X SPLINE:

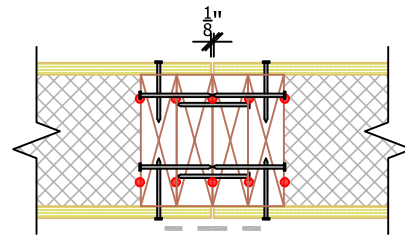
NAIL SPLINE ASSEMBLY TOGETHER WITH 10d BOX (0.131)
NAILS 12" O.C. IN TWO ROWS STAGGERED FOR EACH MEMBER,
U.N.O. IN SHEAR WALL SCHEDULE. FACING TO SPLINE NAILING
PER PBS-100S or PBS-100D U.N.O.



N.T.S.

(EVEN NUMBERED) 2X SPLINE:

NAIL SPLINE ASSEMBLY TOGETHER WITH 10d BOX (0.131)
NAILS 12" O.C. IN TWO ROWS STAGGERED FOR EACH MEMBER,
U.N.O. IN SHEAR WALL SCHEDULE. FACING TO SPLINE NAILING
PER PBS-100S or PBS-100D U.N.O.



Rev: 6/3/2022

PBS-208

ALTERNATE LUMBER SPLINES

