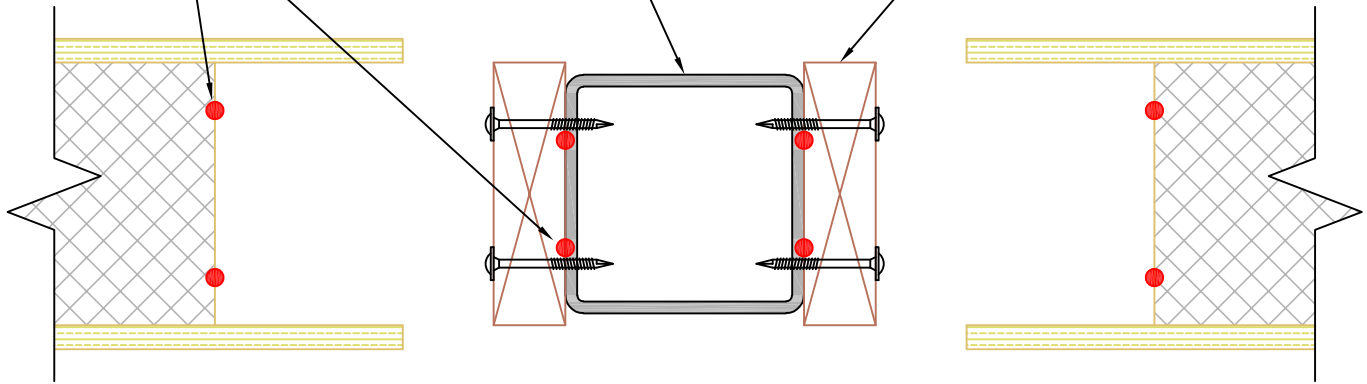


3/8"φ SEALANT
PER PBS-103 OR
PBS-104

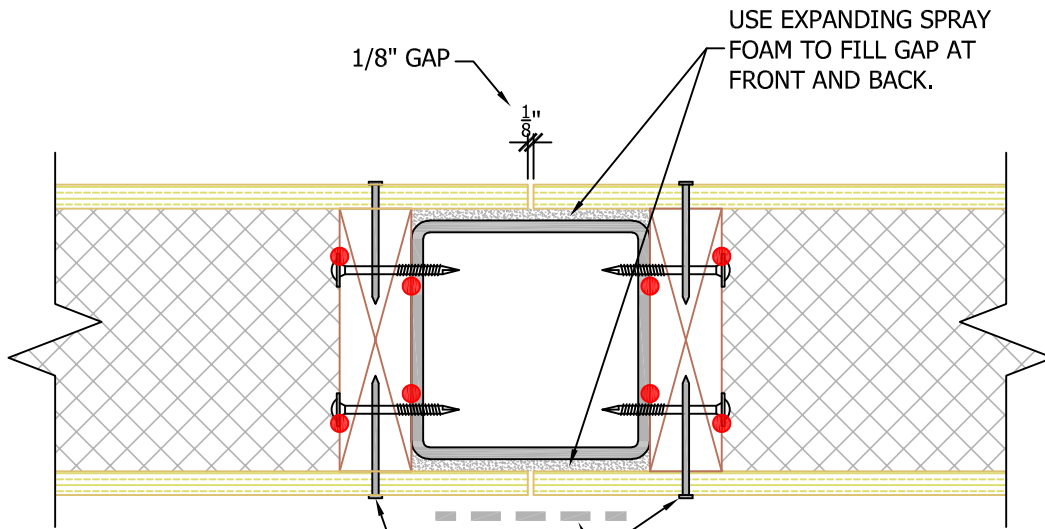
TUBE STEEL
PER PLAN

2X NAILER ATTACHED TO STEEL
WITH SIMPSON TB1460S SELF
TAPPING SCREWS SPACED PER
ENGINEER. U.N.O.



1/8" GAP

USE EXPANDING SPRAY
FOAM TO FILL GAP AT
FRONT AND BACK.



NAILS INTO EACH
MEMBER PER
PBS-100 U.N.O.

SIP TAPE LOCATED
INTERIOR FACE PER
PBS-105

N.T.S.

Rev: 12/10/2021

PBS-209

HSS 2X SPLINE

