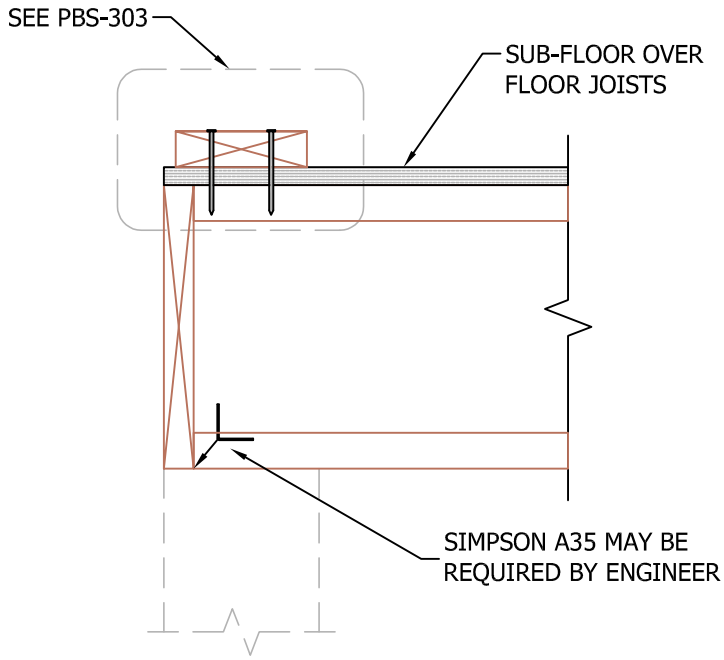
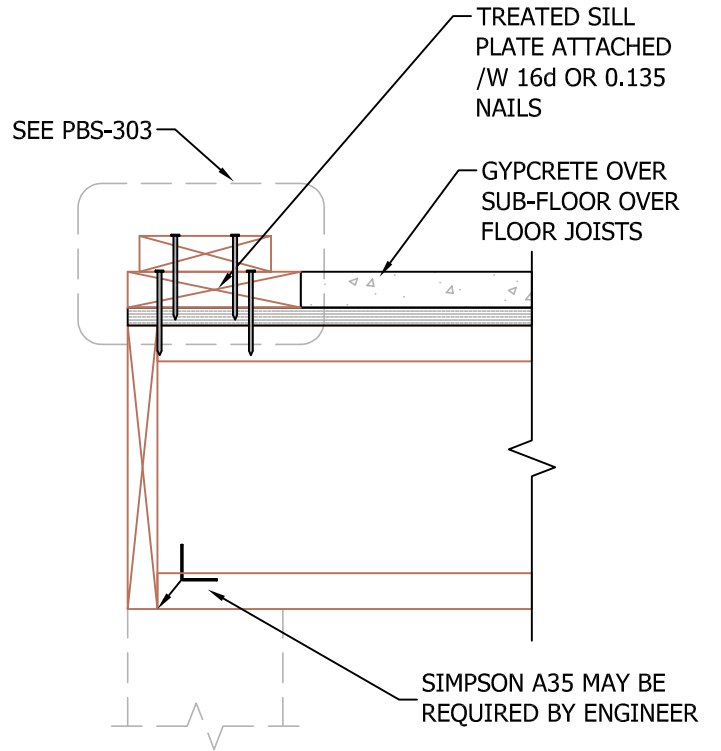


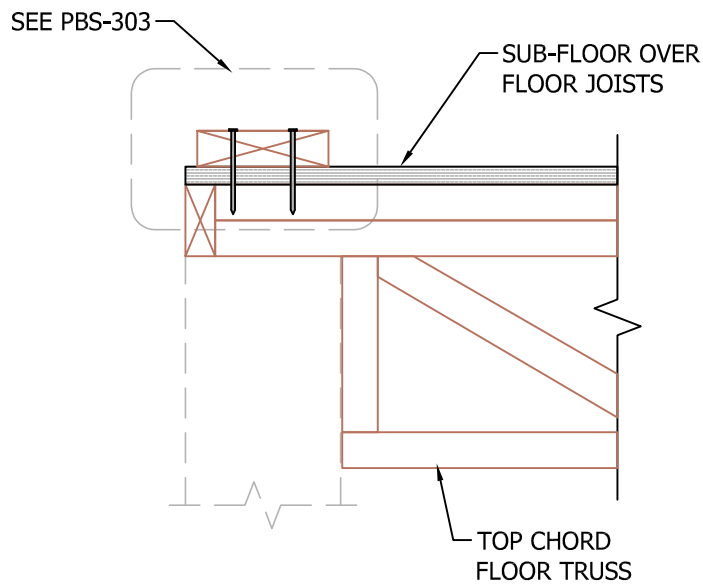
E: CONVENTIONAL FLOOR SYSTEM



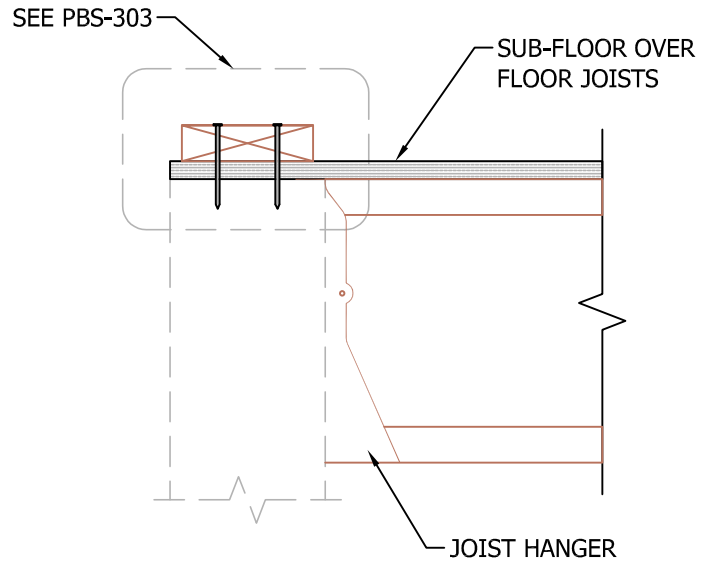
F: CONVENTIONAL FLOOR SYSTEM W/ GYPCRETE



G: TOP CHORD FLOOR SYSTEM



H: HANGING FLOOR SYSTEM



N.T.S.

Rev: 12/10/2021

PBS-304E-H

BOTTOM PLATE FLOOR JOISTS TO WALL

