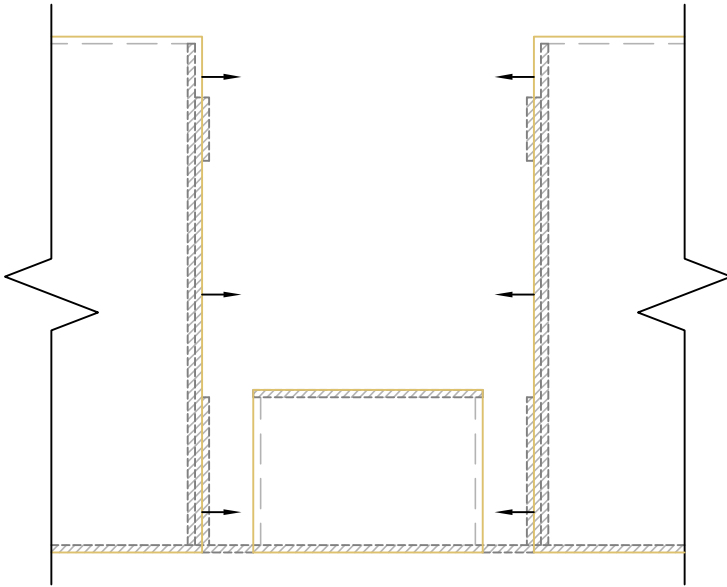


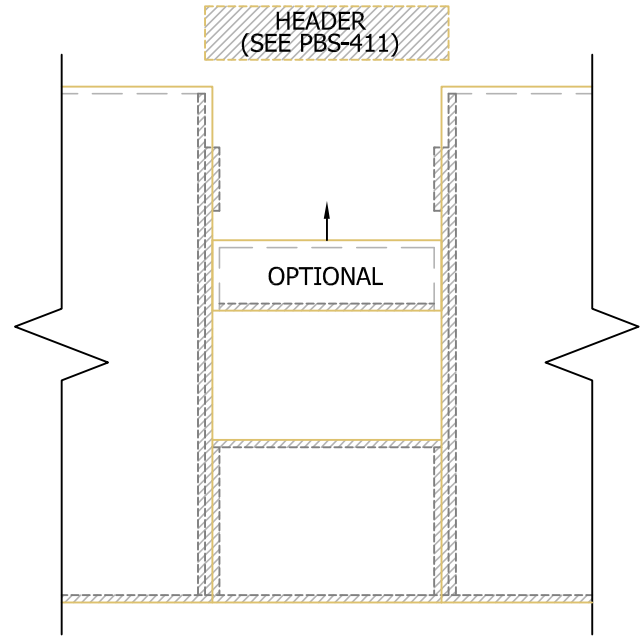
STEP #1:

1. PRE-DRILL ELECTRICAL CHASES PER PBS-106.
2. INSTALL KINGS, TRIMMERS, & NAILERS INTO SIP USING (2) 3/8" BEADS OF SEALANT PER PBS-103 AT ALL INTERFACES (LUMBER TO LUMBER AND LUMBER TO SIP).
3. ASSEMBLE SIPS ON THE GROUND AND LIFT INTO PLACE OR ASSEMBLE VERTICALLY, ONE PIECE AT A TIME.



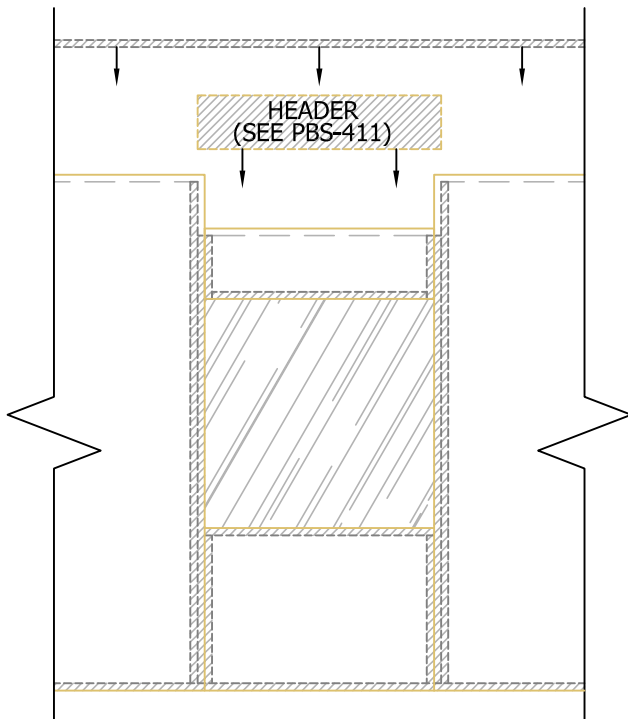
STEP #2:

1. DROP FILLER SIP FROM ABOVE OR BELOW 2x NAILER MEMBERS, WHICHEVER METHOD IS EASIEST.
2. CUT HEADER TO LENGTH FROM FACE OF KING TO FACE OF KING. (SEE PBS-411 FOR ASSEMBLIES).



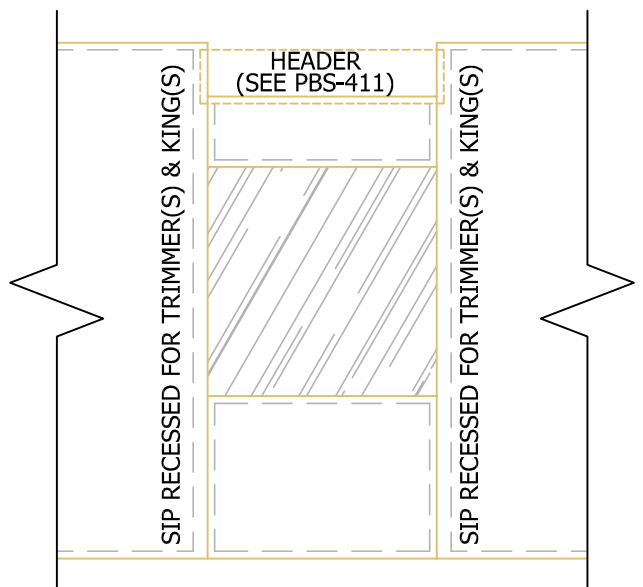
STEP #3:

1. DROP IN HEADER FROM ABOVE.
2. INSTALL CONTINUOUS TOP PLATE ACROSS HEADER AND SIPS.



NOTES:

1. ALL NAILING PER PBS-205 AND PBS-400 U.N.O.
2. FOAM EDGE OF SIPS WILL BE RECESSED AT FACTORY TO RECEIVE LUMBER PER SIP SHOP DRAWINGS.
3. FUR OUT EACH SIDE OF HEADER AFTER INSTALLATION.



N.T.S.

Rev: 12/10/2021

PBS-407

HEADER AT TOP OF SIP WALL
ASSEMBLY SEQUENCE

