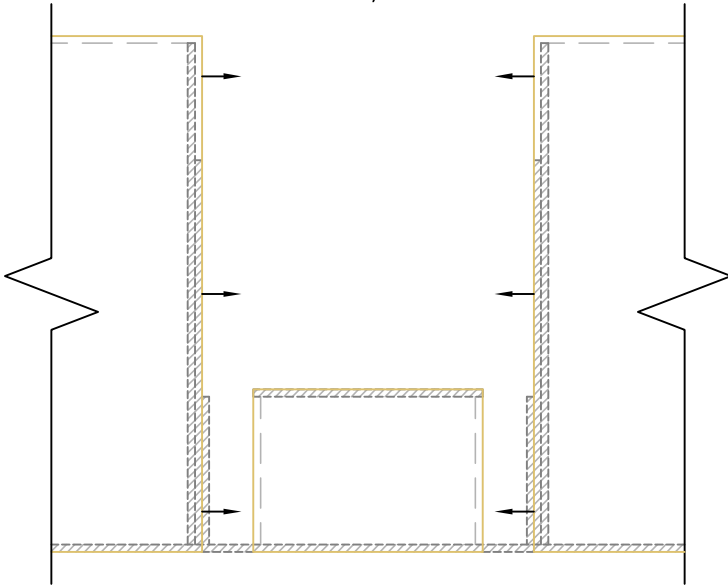


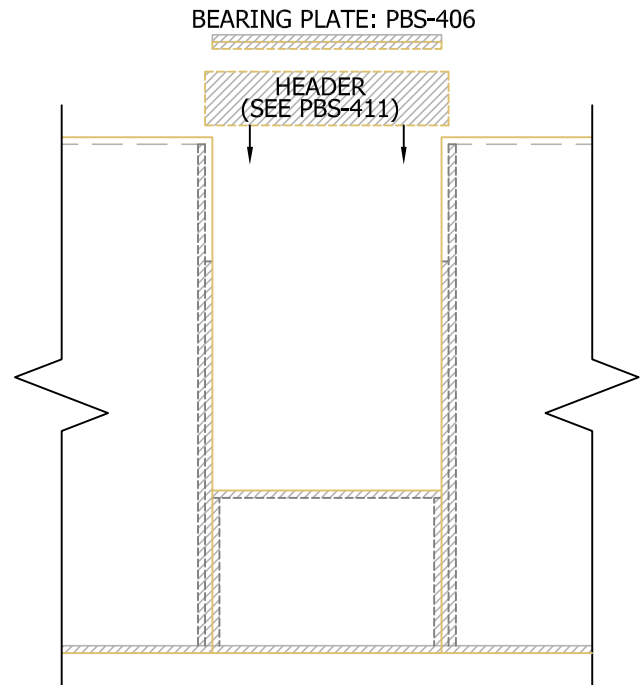
**STEP #1:**

1. PRE-DRILL ELECTRICAL CHASES PER PBS-106.
2. INSTALL KINGS, TRIMMERS, & NAILERS INTO SIP USING (2) 3/8" BEADS OF SEALANT PER PBS-103 AT ALL INTERFACES (LUMBER TO LUMBER AND LUMBER TO SIP).
3. ASSEMBLE SIPS ON THE GROUND AND LIFT INTO PLACE OR ASSEMBLE VERTICALLY, ONE PIECE AT A TIME.



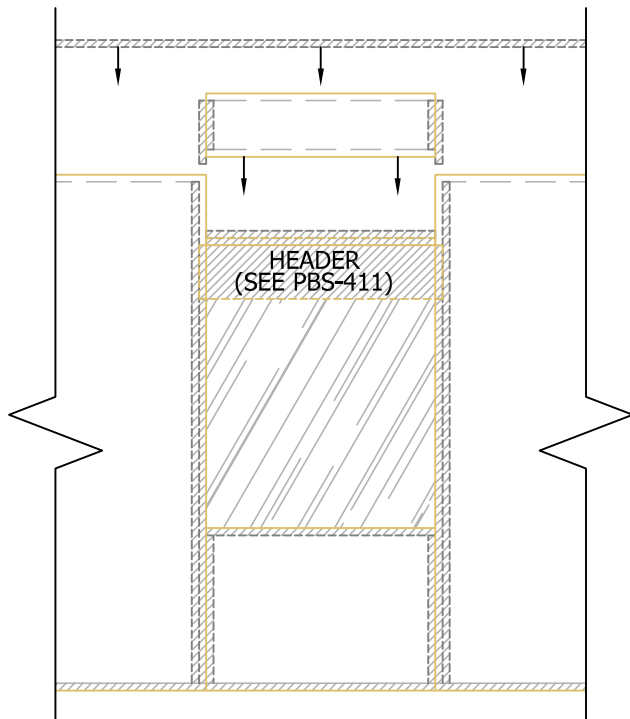
**STEP #2:**

1. CUT HEADER TO LENGTH FROM FACE OF KING TO FACE OF KING. (SEE PBS-411 FOR ASSEMBLIES).
2. DROP HEADER IN FROM ABOVE.
3. INSTALL ASSEMBLED BEARING PLATE TO TOP OF HEADER PER PBS-406.



**STEP #3:**

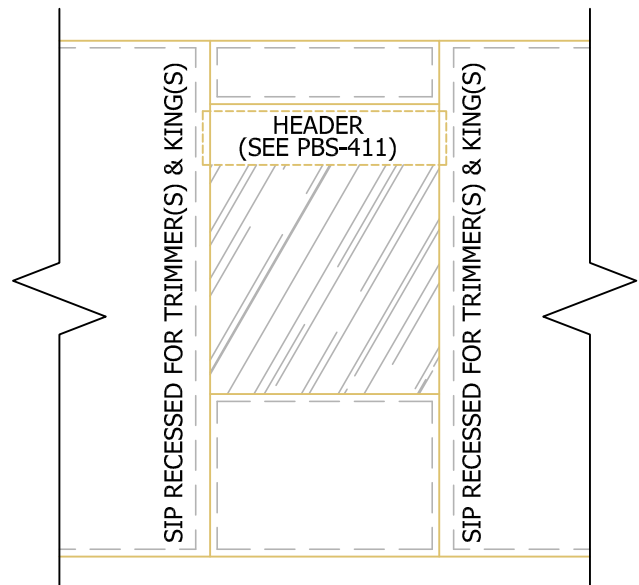
1. DROP FILLER SIP FROM ABOVE.
2. INSTALL CONTINUOUS TOP PLATE ACROSS SIP JOINTS.



N.T.S.

**NOTES:**

1. ALL NAILING PER PBS-205 AND PBS-400 U.N.O.
2. FOAM EDGE OF SIPS WILL BE RECESSED AT FACTORY TO RECEIVE LUMBER PER SIP SHOP DRAWINGS.
3. FUR OUT EACH SIDE OF HEADER AFTER INSTALLATION.



Rev: 12/10/2021

**PBS-408**

**HEADER AT TOP OF OPENING  
ASSEMBLY SEQUENCE**

