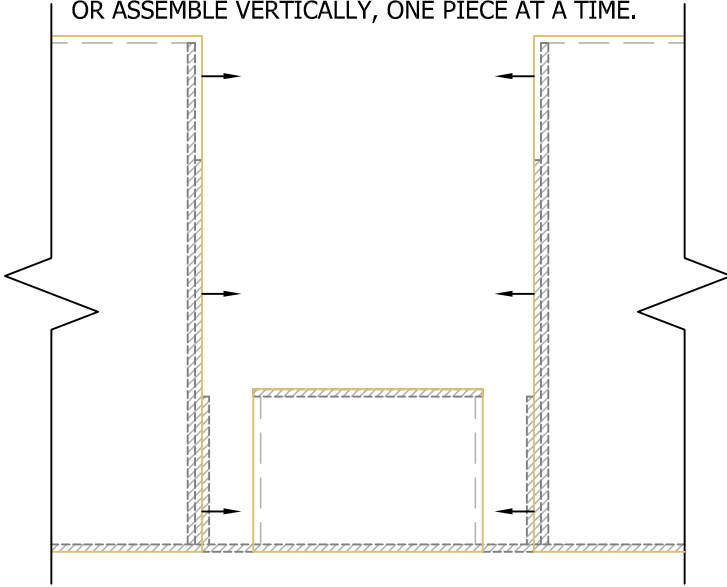


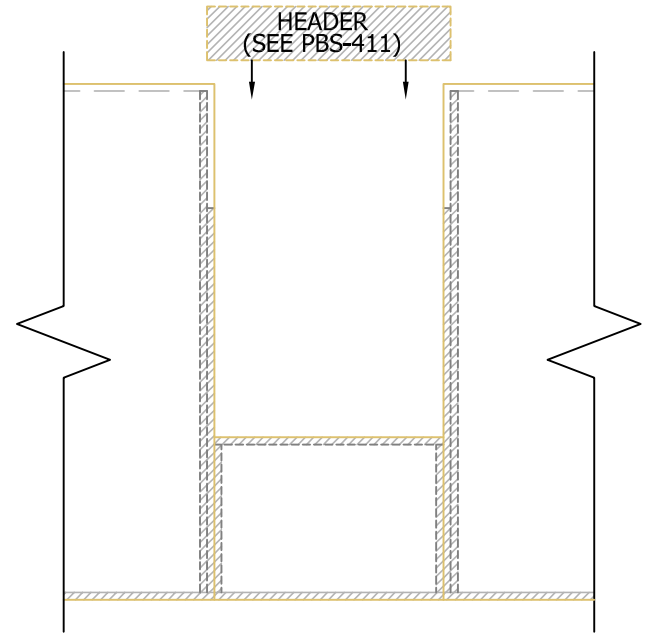
STEP #1:

1. PRE-DRILL ELECTRICAL CHASES PER PBS-106.
2. INSTALL KINGS, TRIMMERS, & NAILERS INTO SIP USING (2) 3/8" BEADS OF SEALANT PER PBS-103 AT ALL INTERFACES (LUMBER TO LUMBER AND LUMBER TO SIP).
3. ASSEMBLE SIPS ON THE GROUND AND LIFT INTO PLACE OR ASSEMBLE VERTICALLY, ONE PIECE AT A TIME.



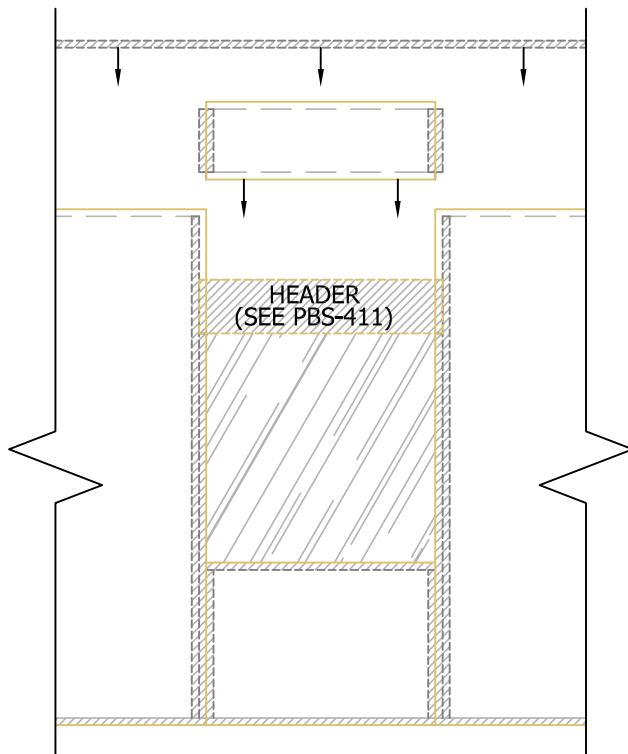
STEP #2:

1. CUT HEADER TO LENGTH FROM FACE OF KING TO FACE OF KING. (SEE PBS-411 FOR ASSEMBLIES).
2. DROP HEADER IN FROM ABOVE.



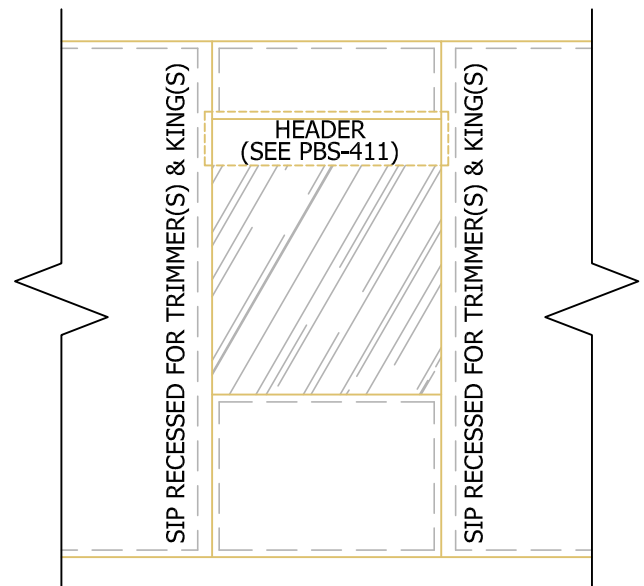
STEP #3:

1. DROP FILLER SIP FROM ABOVE.
2. INSTALL CONTINUOUS TOP PLATE ACROSS SIP JOINTS.



NOTES:

1. *THIS DETAIL DOES NOT ALLOW FOR SIP FACING BEARING FOR SIP ABOVE HEADER PER PBS-406. LOADS MUST BE TRANSFERRED FROM FACING INTO HEADERS BY FACING NAILS ALONE. THIS CONDITION MUST BE ENGINEERED.
2. ALL NAILING PER PBS-205 AND PBS-400 U.N.O.
3. FOAM EDGE OF SIPS WILL BE RECESSED AT FACTORY TO RECEIVE LUMBER PER SIP SHOP DRAWINGS.
4. FUR OUT EACH SIDE OF HEADER AFTER INSTALLATION.



N.T.S.

Rev: 12/10/2021

PBS-409

HEADER AT TOP OF OPENING
LIMITED BEARING* ASSEMBLY SEQUENCE

