

NOTES:

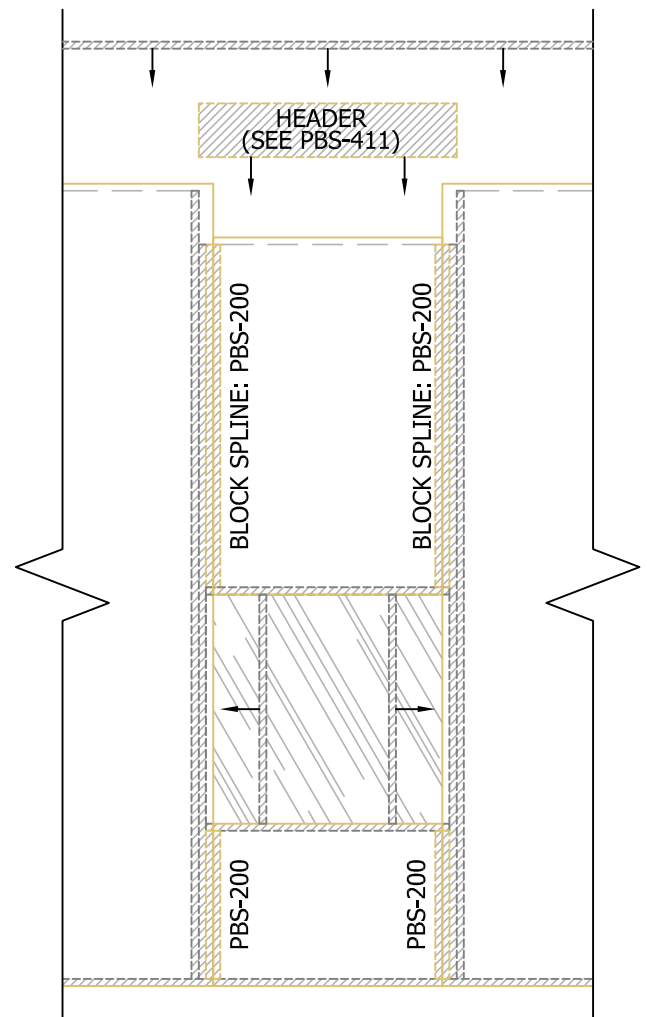
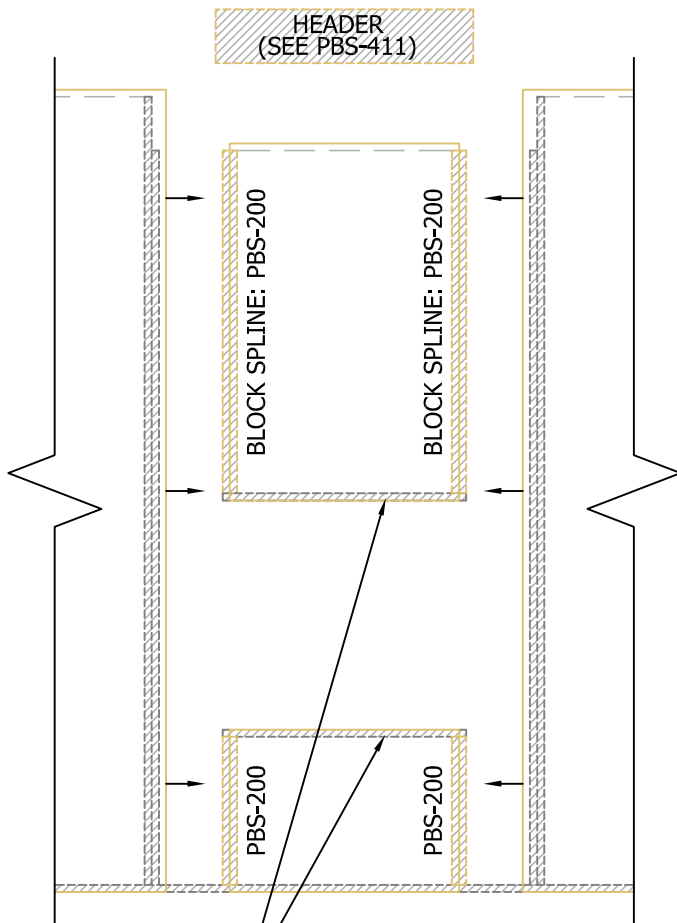
1. THIS DETAIL IS USEFUL IN SITUATIONS WHERE THE SILL AND FILLER SIPs ARE TALLER THAN THE OPENING BY REPLACING 2X NAILER LUMBER WITH BLOCK SPLINES, THEREBY REDUCING THERMAL BRIDGING.
2. ALL NAILING PER PBS-205 AND PBS-400 U.N.O.
3. USE (2) 3/8" BEADS OF SEALANT PER PBS-103 AT ALL INTERFACES (LUMBER TO LUMBER AND LUMBER TO SIP).
4. FOAM EDGE OF SIPs WILL BE RECESSED AT FACTORY TO RECEIVE LUMBER PER SIP SHOP DRAWINGS.
5. FUR OUT EACH SIDE OF HEADER AFTER INSTALLATION.

STEP #1:

1. PRE-DRILL ELECTRICAL CHASES PER PBS-106.
2. INSTALL KINGS & TRIMMERS INTO SIP SO THAT 1 1/2" OF OSB FACING REMAINS TO RECEIVE SILL AND FILLER SIPs.
3. INSTALL 2X TO TOP OF SILL AND BOTTOM OF FILLER SIP SO THAT 2X EXTENDS 1 1/2" PAST EDGE OF SIP FACING.
4. INSTALL BLOCK SPLINE IN VERTICAL EDGES OF SILL AND FILLER SIP SO THAT BLOCK SPLINE IS FLUSH TO FOAM.
5. ASSEMBLE SIPs ON THE GROUND AND LIFT INTO PLACE OR ASSEMBLE VERTICALLY, ONE PIECE AT A TIME.

STEP #2:

1. CUT HEADER TO LENGTH FROM FACE OF KING TO FACE OF KING. (SEE PBS-411 FOR ASSEMBLIES).
2. INSTALL TWO 2X WINDOW BUCK PIECES WITHIN VERTICAL EDGES OF ROUGH OPENING.
3. DROP IN HEADER FROM ABOVE.
4. INSTALL CONTINUOUS TOP PLATE ACROSS HEADER AND SIPs.



(1) CONTINUOUS
2X EXTENDS PAST
SIP FACINGS.

N.T.S.

Rev: 12/10/2021

PBS-410

HEADER AT TOP OF TALL SIP WALL
ASSEMBLY SEQUENCE

