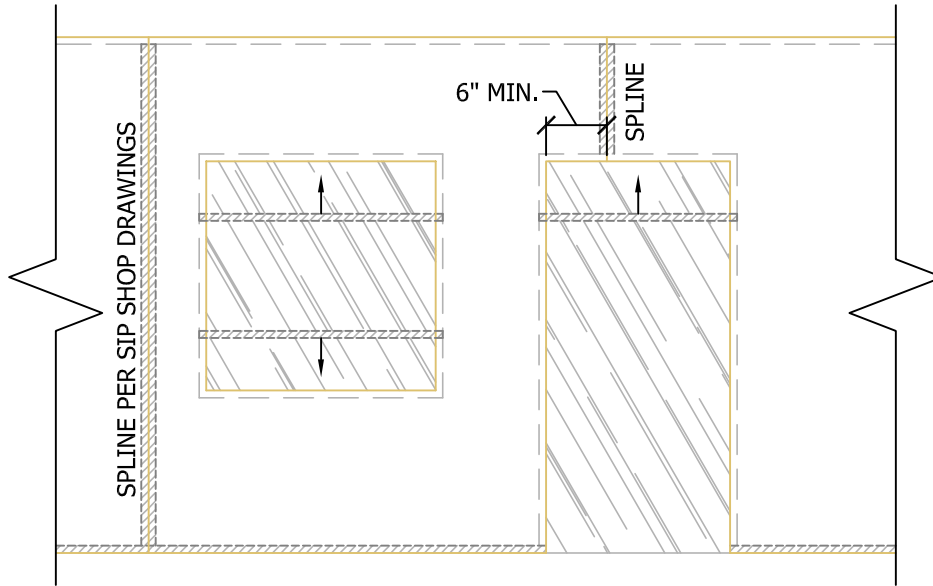


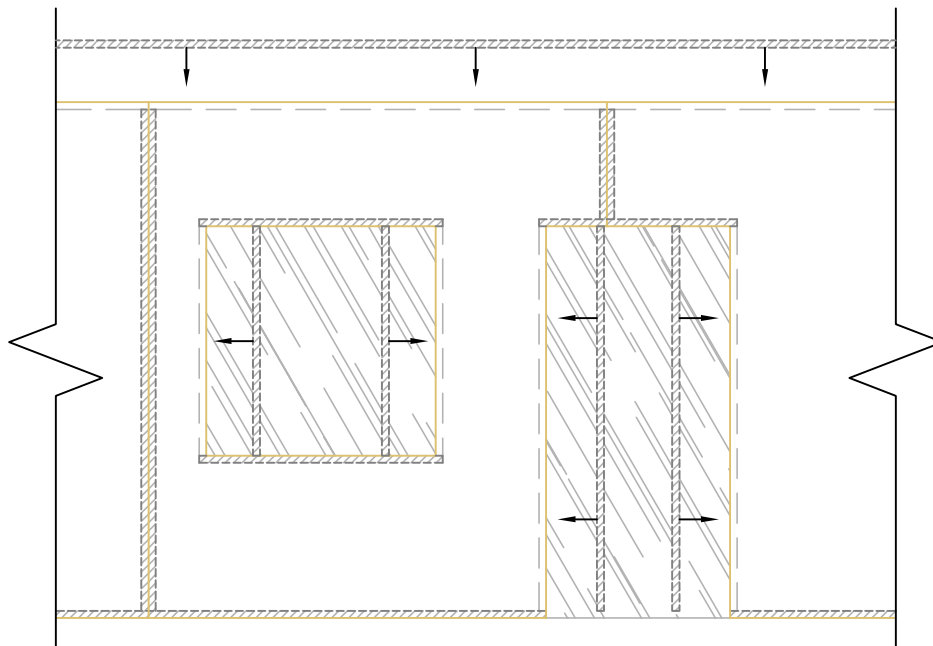
NOTES:

1. ALL NAILING PER PBS-205 AND PBS-400 U.N.O.
2. USE (2) 3/8" BEADS OF SEALANT PER PBS-103.
3. FOAM EDGE OF SIPS WILL BE RECESSED AT FACTORY TO RECEIVE LUMBER PER SIP SHOP DRAWINGS.

STEP #1:
INSTALL OPENING TOP AND BOTTOM 2X MEMBERS FLUSH TO FOAM.



STEP #2:
1. PRE-DRILL ELECTRICAL CHASES PER PBS-106
2. INSTALL OPENING VERTICAL 2X MEMBERS FLUSH TO LUMBER PLATES AT TOP AND BOTTOM OF OPENING.
3. INSTALL CONTINUOUS TOP PLATE ACROSS SIP JOINTS.



N.T.S.

Rev: 12/10/2021

PBS-412

FACTORY CUT OPENINGS

