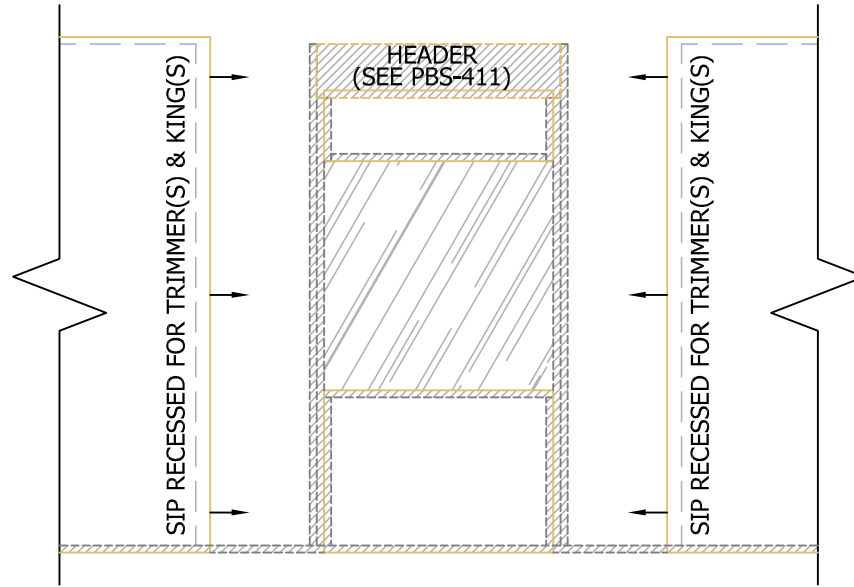


NOTES:

1. ALL NAILING PER PBS-205 AND PBS-400 U.N.O.
2. USE (2) 3/8" BEADS OF SEALANT PER PBS-103 AT ALL INTERFACES (LUMBER TO LUMBER AND LUMBER TO SIP).
3. FOAM EDGE OF SIPS WILL BE RECESSED AT FACTORY TO RECEIVE LUMBER PER SIP SHOP DRAWINGS.

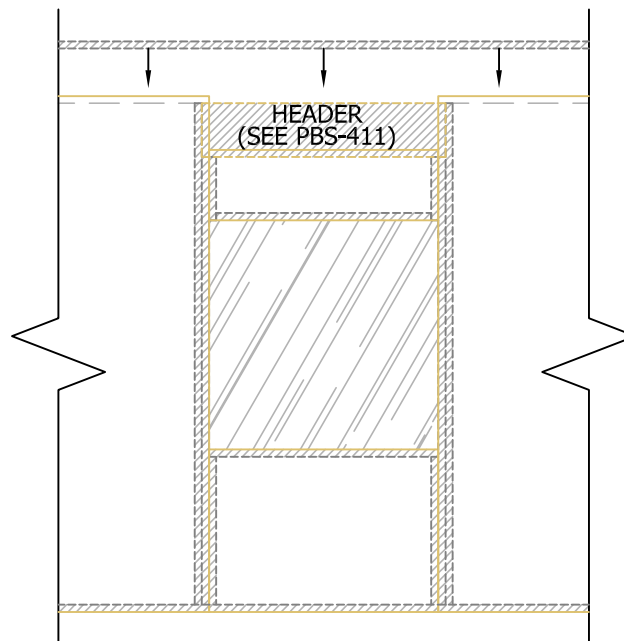
STEP #1:

1. ASSEMBLE KINGS, TRIMMERS, NAILERS, SILL, FILLER SIP, AND HEADER INTO ONE PIECE.
2. PRE-DRILL ELECTRICAL CHASES PER PBS-106.
3. INSTALL ASSEMBLY INTO ADJACENT SIPS.



STEP #2:

INSTALL CONTINUOUS TOP PLATE ACROSS SIP JOINTS.



N.T.S.

Rev: 12/10/2021

PBS-413

RTA OPENING
ASSEMBLY SEQUENCE

PREMIER
SIPS